

Spb TV 1.0

User Manual



Copyright Notice

© 2009 Spb Software. All rights reserved. Information in this manual is subject to change without notice and does not represent a commitment on the part of Spb Software. All company and product names mentioned in the manual may be trademarks or registered trademarks of their respective owners.



Table of Contents

Table of Contents	2
Overview	3
Software Features	3
Installation	4
System Requirements	4
Installing.....	4
Registration.....	4
Uninstalling	4
Getting Started	5
Spb TV Options	5
Technical Support	6
About The Trial Version	6
Before Contacting Technical Support	6
Contacting Technical Support	6

Overview

Spb TV is a highly usable IP-TV solution, optimized to run on mobile devices. Spb TV provides users with lots of channels in multiple languages with easy-to-use features and settings. No subscription fee!

Software Features

Integrated TV Guide

Under the preview picture you can see the integrated TV guide, tapping on it will open the full guide for the next few days of the selected channel.

On-screen Control Panel

In the full screen mode you can recall the on-screen control panel at any time by tapping anywhere on the screen.

Setting a Reminder

Possibility to easily make Outlook reminders, from the TV guide, if you see an interesting show that you don't want to miss.

Battery Indicator

In the full screen watching mode you can see the battery level, estimated battery time and current time by tapping the screen.

Video Quality Switcher

To manually reduce the video quality and retain audio quality in case the Internet connection become slower.



Installation

Installation of Spb TV is a very simple process and takes less than five minutes to complete. The following installation guide will help you.

System Requirements

Make sure your system meets the following minimum requirements before installation. Spb TV supports the following operating systems.

- Windows Mobile 5 Phone Edition
Windows Mobile 5 Pocket PC
Windows Mobile 6 Classic
Windows Mobile 6 Professional
Windows Mobile 6.1 Classic
Windows Mobile 6.1 Professional



Installing

After you have [downloaded](#) the Spb TV distribution file you should install it to your device. For a successful installation you will need a device attached to your Windows desktop PC. You will also need [Microsoft ActiveSync](#) software in order to install Spb TV to your device.

When you run the software installer on your desktop PC it will ask you to accept the license agreement and will start the installation program. You will be prompted for the location where you want the software to be installed. Spb TV can be installed to a storage card.

Note: Microsoft ActiveSync works only with Windows XP SP3 or earlier. If you have Windows Vista, your synchronization settings will be managed through the Windows Mobile Device Center. Windows Mobile Device Center is available through the [Windows Mobile Device Center page](#).

Registration

The trial version (lite) of Spb TV has a restricted number of channels and features that are available in the registered version (full). You can use the trial version only to check how Spb TV works. In order to watch all public channels, use the Outlook reminder feature, and manage the channels list, you need to purchase the license. There is no need to re-install Spb TV in order to use the full version.

To obtain the serial number you need to purchase an Spb TV software license and you will receive your serial number by email. You can buy the Spb TV software license right from Spb TV registration screen **Menu > Registration....** Select your preferred method of payment and follow the instructions.

Uninstalling

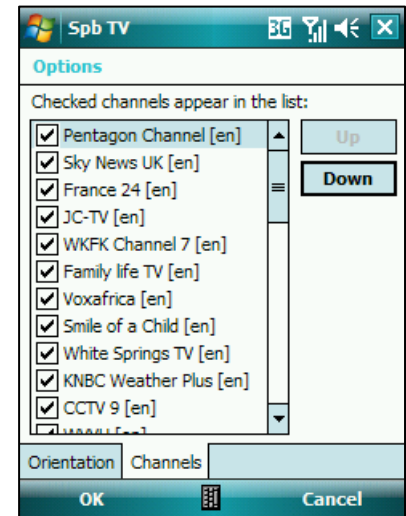
If you need to uninstall Spb TV software for any reason from your Device do the following:

1. Go to **Start menu > Settings**
2. Open **System** and tap on **Remove Programs**
3. Select **Spb TV** from the list and tap on the **Remove** button
4. Choose **Yes** to confirm removing

Getting Started

An Internet connection is required in order to use Spb TV service. Establish your preferred Internet connection method depending on your tariff plan before starting the program. To watch smooth online TV on your device a Wi-Fi, 3G, WiMAX, or cradle Internet connection is needed.

- Start by selecting your favorite channels and organizing them. To do that tap **Menu > Options... > Channels** tab and uncheck channels that you do not want to watch. Use the **Up/Down** buttons to organize the channels list. Start the list order with the most important channels. Tap **ok** after you finish.
- Tap the TV channel preview picture to start watching in full screen mode. Under the preview picture you can see the integrated TV guide, tapping on it will open the full guide for the next few days.
- In the full screen mode you can recall the on-screen control panel at any time by tapping anywhere on the screen. The on-screen controls will give you quick access to the battery indicator (on the top-right corner), current time, channel switching panel, video quality switcher, volume level controller, backlight level controller, and the exit button.



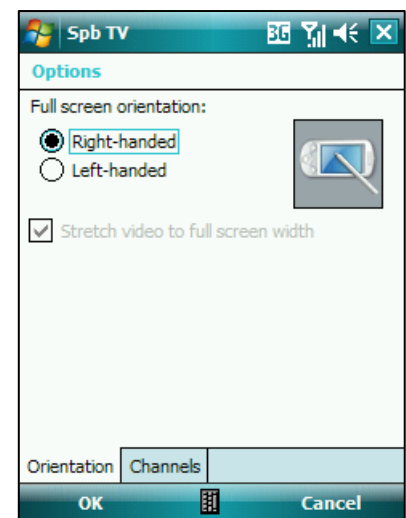
Tip

If you have a slow Internet connection, you may need to switch to low quality video that will put less strain on network and memory resources, giving you a smoother and uninterrupted TV viewing.

Spb TV Options

This chapter covers the program options dialogs in details. To access the configuration utility go to **Menu > Options...**

- **Orientation:** Change the screen orientation to landscape right-handed or landscape left-handed in the full screen mode. Enable **Stretch video to full screen width** option to use the full width of the screen on Wide VGA devices.
- **Channels:** Select the channels that you want to see in the channels list. Select a channel and tap the **Up** or **Down** button to organize your favorite channels.



Technical Support

This chapter contains technical support information. It includes all the information you need to assist you.

About The Trial Version

The trial version (lite) of Spb TV has a restricted number of channels and features that are available in the registered version (full). You can use the trial version only to check how Spb TV works. In order to watch all public channels, use the Outlook reminder feature, and manage the channels list, you need to purchase the license. There is no need to re-install Spb TV in order to use the full version.

To obtain the serial number you need to purchase an Spb TV software license and you will receive your serial number by email. You can buy the Spb TV software license right from Spb TV registration screen **Menu > Registration....** Select your preferred method of payment and follow the instructions.

Before Contacting Technical Support

Please read this section before contacting Technical Support, it includes many common important issues users might face.

- Consult the help installed with your program. From any of Spb TV screens select **Help** menu item from the **Start** menu.
- Refer to the Frequently Asked Questions (FAQs) in the Support section of the Spb Software website. The FAQs may have information and helpful hints that are more current than the user manual:
<http://www.spbsoftwarehouse.com/products/tv/faq.html>

Contacting Technical Support

Please take advantage of one of the Spb Software free technical support options:

- Choose the appropriate category for your question and submit it to our support team at: <http://www.spbsoftwarehouse.com/products/tv/support.html>
- Ask your technical question or post feature request to forum to get quicker reply directly from the developer's team. Solutions to your problems are available 24 hours a day at no cost on the Spb Club web site. You must first register as a member before using [Spb Club web support](#).

Please include the following information to help us isolate the problem:

1. The type of the device that you are using.
2. The software name and version number. Open Spb TV and select **Menu** → **About...** to view the software name and version number (example: Spb TV, version 1.0, Build 346).
3. Any error messages that accompany the problem.
4. A brief description of how we can recreate the issue.